



aplombtech



SMART ROUTER

+88 0170 6762 995/6

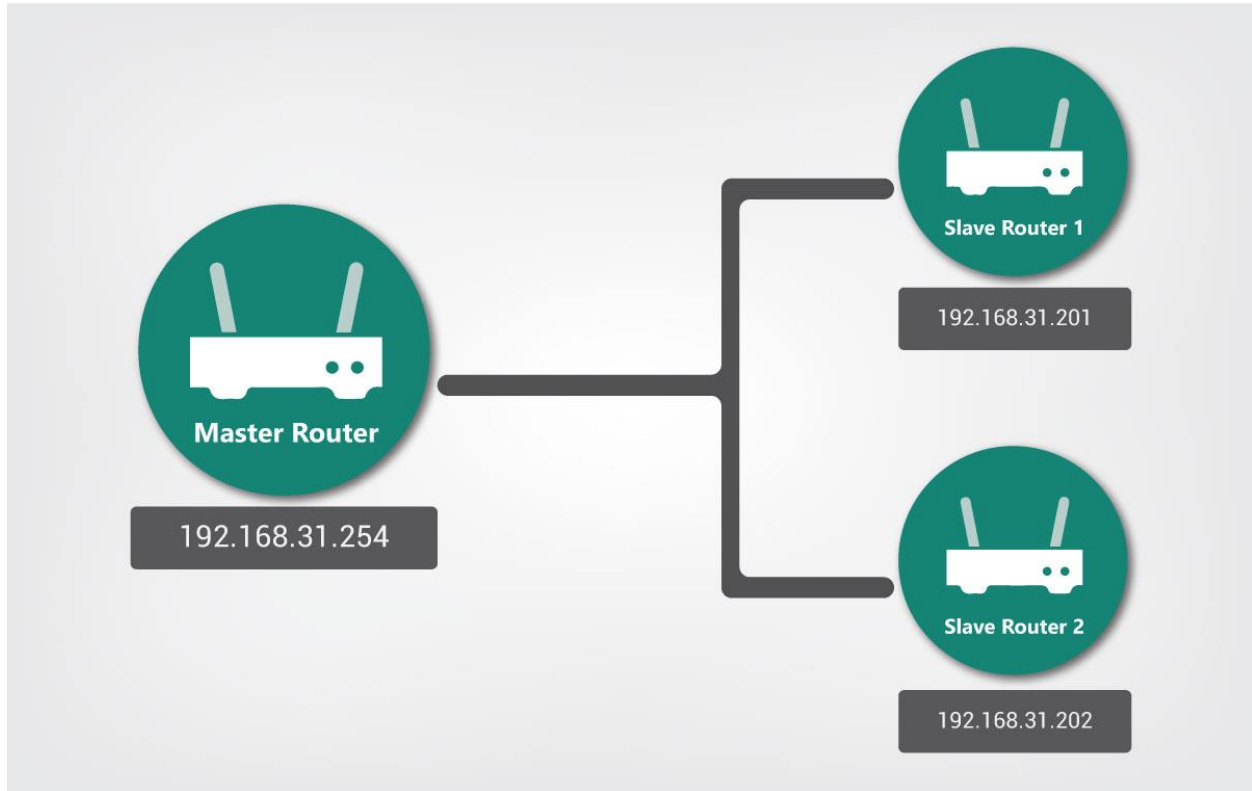
www.aplombtechbd.com

AplombTech Smart Router AP Mode

(Version 1.0)

AplombTech Smart Router AP Mode

You can use multiple SmartRouters to extend the coverage of your home network using AP (Access Point) mode. For this purpose, you need at-least 2 SmartRouters.



Let's name the main router as **Master** and the extended router as **Slave**. Power on the **Slave** router and connect to it via LAN or WiFi. Then go to 192.168.31.254 and login using username admin and password admin.

Go to Navigation Menu > Internet > LAN. Now do the following things.

- Disable DHCP Server
- Set LAN IP Address to any available IP excluding from Master's DHCP Pool.

LAN Interface Setup

LAN Interface Setup	
IP Address	<input type="text" value="192.168.31.250"/>
Subnet Mask	<input type="text" value="255.255.255.0"/>
MAC Address	<input type="text" value="F8:B5:68:AF:20:CF"/>
DHCP Type	<input type="text" value="Disable"/>
UPNP	<input type="text" value="Disable"/>
Router Advertisement	<input type="text" value="Disable"/>

APPLY

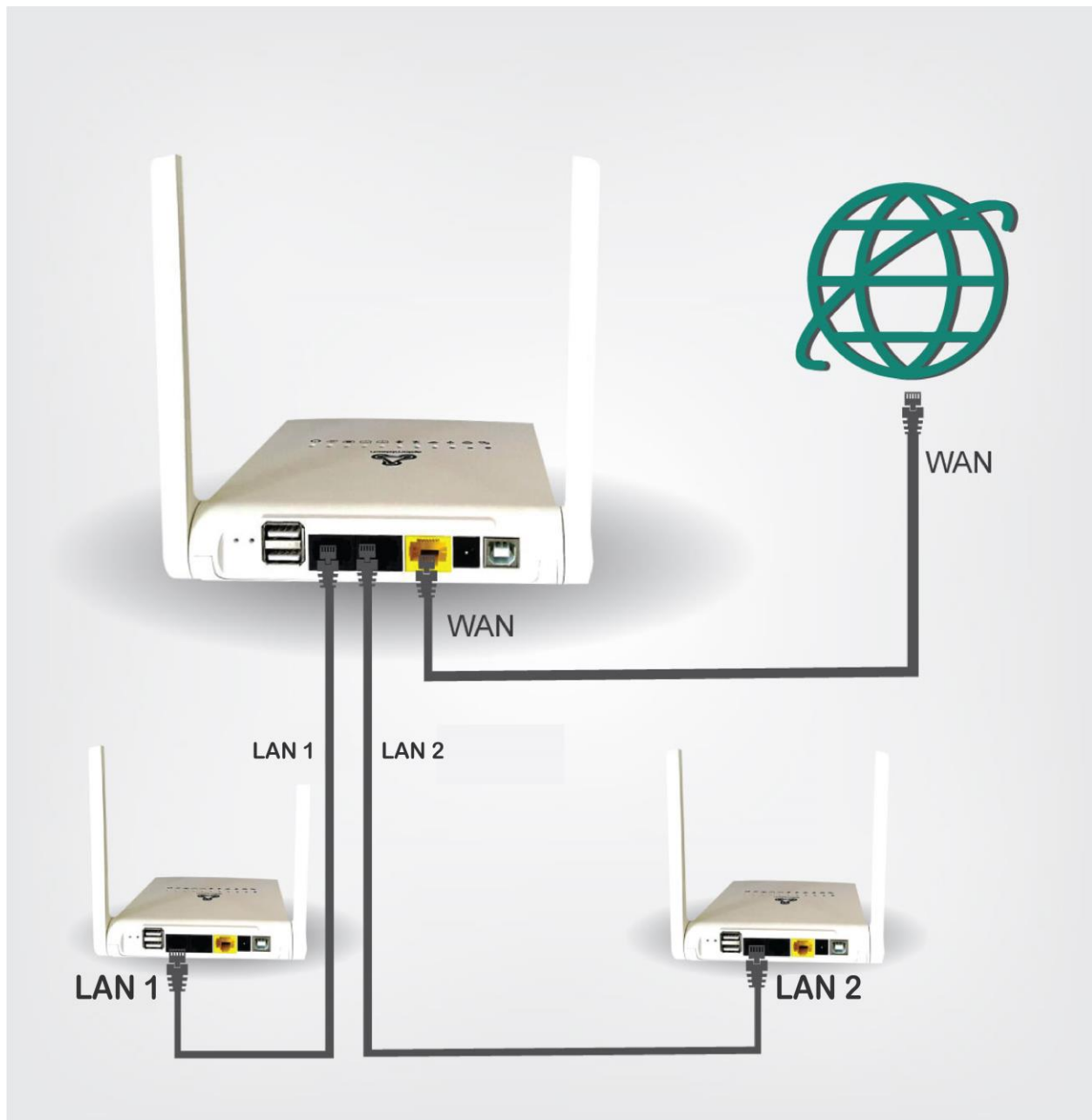
CANCEL

For example, the Master router provides IP from 192.168.31.100 to 192.168.31.200 to DHCP Clients. Then the IP 192.168.31.201 can be safely set as the LAN IP Address of Slave Router.

Click Apply and then it will take some time for the router to apply the changes. You will be disconnected from the **Slave** router as the LAN IP Address has been changed.

Now connect a LAN cable from the **Master's** any LAN port to the Slave's any LAN port.

N.B. Do not connect the Master's LAN port to the Slave's WAN port. This will make the network unstable.



Then connect to the **Master** router via LAN or WiFi then browse to the IP 192.168.31.201 or the one you specified earlier. Now perform the following tasks.

- Login to it and go to Wireless > Basic menu. Change the SSID to match the WiFi SSID of **Master**. This will allow Roaming mode for all your devices.

Basic Wireless Settings

Wireless Network	
WiFi ON/OFF	<input type="button" value="WIFI OFF"/>
Network Mode	11b/g/n mixed mode ▾
Network Name (SSID)	<input type="text" value="APL"/> <input type="checkbox"/> Hidden <input type="checkbox"/> Isolated
Broadcast SSID	<input checked="" type="radio"/> Enable <input type="radio"/> Disable
AP Isolation	<input type="radio"/> Enable <input checked="" type="radio"/> Disable
BSSID	F8:B5:68:AF:20:CE
Frequency (Channel)	AutoSelect ▾

- Go to Wireless > Security and change the password to match the WiFi password of the **Master**.

Wireless Security Settings

SSID: APL	
Security Mode	WPA2-PSK ▼

WPA2-PSK	
WPA Algorithms	<input type="radio"/> TKIP <input type="radio"/> AES <input checked="" type="radio"/> TKIP/AES
Pass Phrase	<input type="text" value="mysecretpassword"/>
Key Renewal Interval	<input type="text" value="3600"/> seconds(0 ~ 4194303)

Access Policy	
Policy	Disable ▼
Add a station Mac:	<input type="text"/>

APPLY

CANCEL

Do the same if you have multiple routers to be setup as AP. Make sure that each router has unique IP Addresses that does not conflict with the DHCP Pool of the **Master** router.